



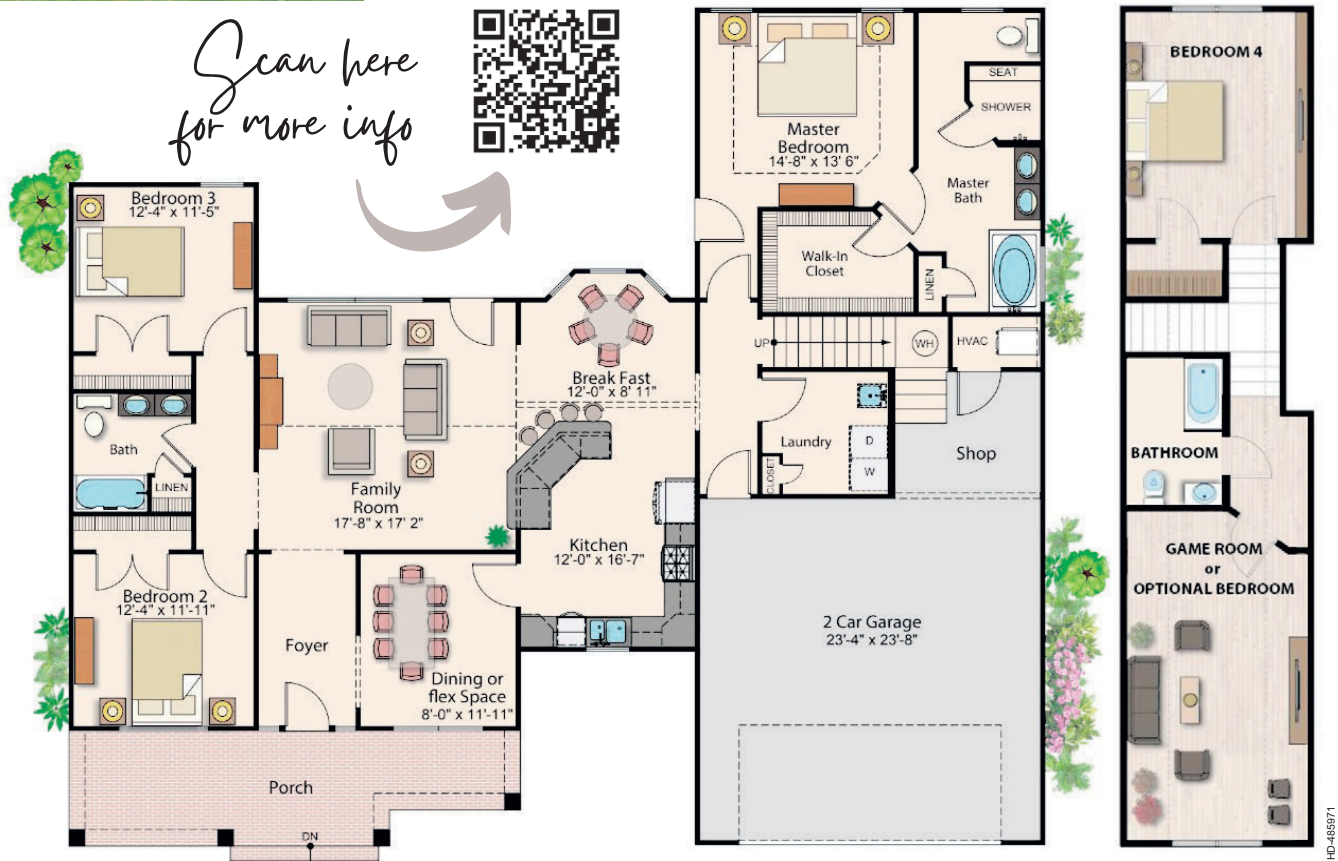
HOUSE OF THE WEEK

THE FERNCREEK

- OPEN FLOOR CONCEPT
- 2 CAR GARAGE WITH SHOP
- FORMAL DINING/FLEX SPACE
- VAULTED CEILING IN GREAT RM
- 4 BEDROOMS (OPTIONAL 5TH)
- 3 FULL BATHS
- SINGLE FAMILY HOME
- 2870 SQ.FT.

THE FERNCREEK

The Ferncreek (2870 sq. ft) is a one and a half story home that features four bedrooms, three full baths, dining/flex space, bonus room, and a two-car garage with space for a shop! This is an excellent plan for a growing family who wants the convenience of one story and a separate space on the half-story! Be greeted by a spacious foyer connecting to the great room and dining/flex space. This inviting open floor plan creates a fluid living space between the great room, breakfast nook, and kitchen area. The sliding glass door leads out to the back porch, perfect for entertaining family gatherings! Pamper yourself in this fabulous Owner's suite boasting of a large walk-in closet, luxurious walk-in shower, and soaking bathtub. You can find two generous size bedrooms on the other side of the home with a full bath. You can conveniently access the laundry room and kitchen right off the garage entrance. In the garage, you have space for a woodworking or crafting station! The second floor carries one additional bedroom, a bonus room (or optional 5th bedroom), and a full bath.



THE AREA'S NEWEST COMMUNITY

AP35
Alexander's Place

PICK YOUR LOT & BUILD IN THE BEAUTIFUL AP35!

We can Build this home for you!

- Located off of Putnam Business Park Drive
- Just 1/2 mile off new Route 35
- Quick access to I-64, conveniently located between Charleston & Huntington!
- Flat lots! Home & Lot Packages starting in the mid \$300s.
- Great community with walking trails, mini-lakes, green areas, picnic shelters, & more!
- Winfield School District Area

Ask us about our AP35 Informational Packets at 304-546-5348

DAVE HOBBA BUILDER
Your "New Home Smile"

CHECK US OUT ON FACEBOOK OR VISIT DaveHobbaBuilder.com