



HOUSE OF THE WEEK

SUGAR MAPLE



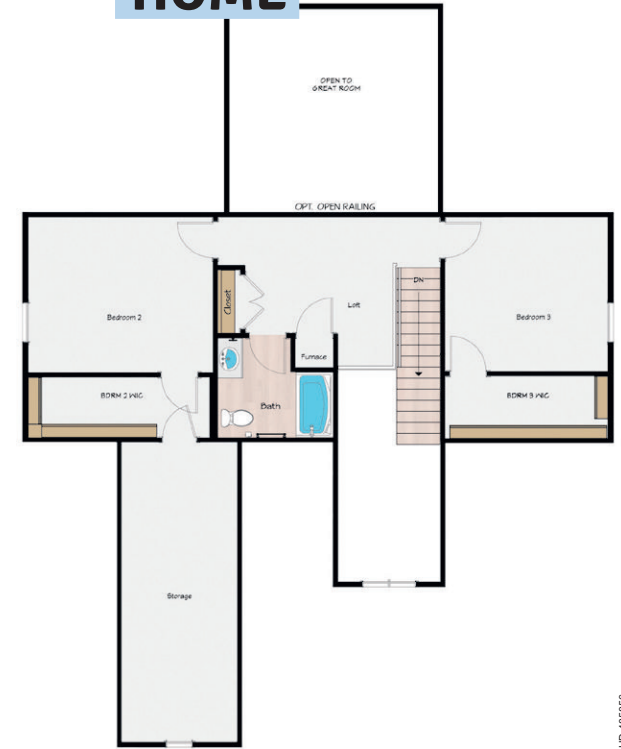
- FORMAL DINING ROOM
- OFFICE SPACE
- LOFT ON THE UPPER-LEVEL
- LARGE STORAGE AREA
- OWNER'S SUITE WALK-IN CLOSET
- 3 BEDROOMS
- 2.5 BATHROOMS 2245 SQ.FT.
- SINGLE FAMILY HOME

THE SUGAR MAPLE

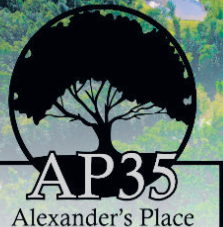
The Sugar Maple(2245sq. ft.) features 3bedrooms, 2.5 baths, formal dining, office space, and a 2-car garage. The beautiful 2–Story home has an ideal layout for extended guest stays or a separate work environment. Stay organized with a first-floor study located off the bright and open foyer. The formal dining room flows into the kitchen area to make entertaining a breeze. The vaulted living area enhances this home's natural light and creates an open airy space! The sliding glass door leads to a great covered back porch perfect for grilling and entertaining! The primary suite holds a large walk-in closet, water closet, and double vanities. The powder room, mudroom & utility room finish off the first floor. The second floor carries 2 additional generous bedrooms, a loft, a full bath, and a large storage area. Opt. for more natural lighting by adding rails to create a catwalk view into the main living area!



2 STORY HOME



THE AREA'S NEWEST COMMUNITY



PICK YOUR LOT & BUILD IN THE BEAUTIFUL AP35!

We can Build this home for you!

- Located off of Putnam Business Park Drive
- Just 1/2 mile off new Route 35
- Quick access to I-64, conveniently located between Charleston & Huntington!
- Flat lots! Home & Lot Packages starting in the mid \$300s.
- Great community with walking trails, mini-lakes, green areas, picnic shelters, & more!
- Winfield School District Area

Ask us about our AP35 Informational Packets at 304-546-5348

CHECK US OUT ON FACEBOOK OR VISIT DaveHobbaBuilder.com



Your "New Home Smile"