



HOUSE OF THE WEEK

THE CLASSIC FARMHOUSE

- FORMAL LIVING AREA
- LARGE WALK-IN CLOSET
- UPPER-LEVEL FAMILY ROOM
- PLENTY OF STORAGE
- 5 BEDROOMS
- 2.5 BATHROOMS
- 2662 SQ.FT.
- SINGLE FAMILY HOME

Classic Farmhouse I (2662 sq. ft.) features 5 bedrooms, 2.5 baths, and 2-car garage. This thoughtful plan holds 4 bedrooms with the primary suite on the first floor. Perfect floorplan for the needs of a new or growing family! The kitchen and dining area is open with easy access to the back porch. Formal living area on the main level to relax individually and a family room on the upper level for a larger gathering! The primary suite holds a large walk-in closet and double vanities. The powder room, mudroom & utility room finish off the first floor. The second floor carries 4 additional, generous bedrooms, a full bath & plenty of storage! Optional ensuite can be added by adding another full bath on upper level.

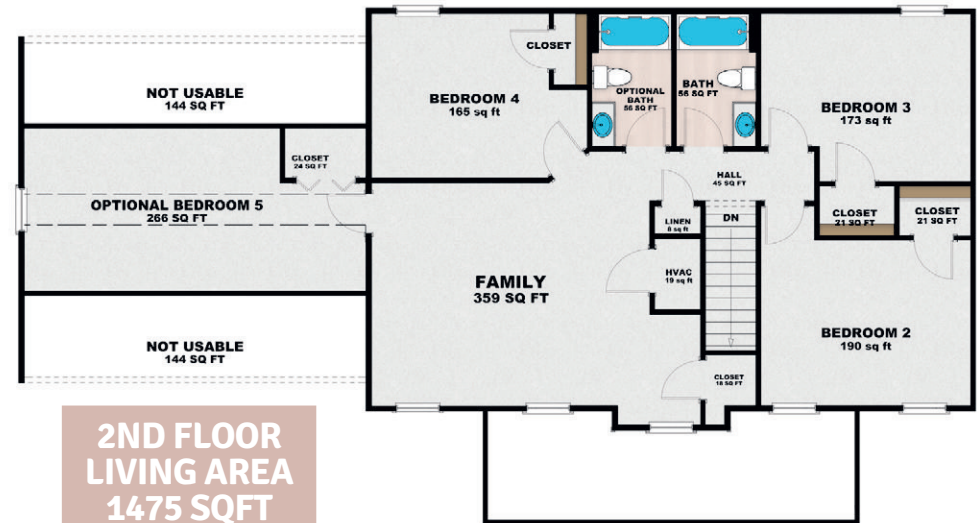
**1ST FLOOR
LIVING AREA
1187 SQFT**



For more info scan here →



**2ND FLOOR
LIVING AREA
1475 SQFT**



THE AREA'S NEWEST COMMUNITY

AP35
Alexander's Place

PICK YOUR LOT & BUILD IN THE BEAUTIFUL AP35!

We can Build this home for you!

- Located off of Putnam Business Park Drive
- Just 1/2 mile off new Route 35
- Quick access to I-64, conveniently located between Charleston & Huntington!
- Flat lots! Home & Lot Packages starting in the mid \$300s.
- Great community with walking trails, mini-lakes, green areas, picnic shelters, & more!
- Winfield School District Area

Ask us about our AP35 Informational Packets at 304-546-5348

CHECK US OUT ON FACEBOOK OR VISIT DaveHobbaBuilder.com

DAVE HOBBA BUILDER
Your "New Home Smile"